

# 884

## 2018 Jeep Wrangler JLU 3" CAT Back w Single tailpipe



- ☐ 1 - 21831 (C-T)
- ☐ 1 - 30025 (7-6M)
- ☐ 1 - JP301 (MTO)
- ☐ 1 - 21833 (8-4)
- ☐ 1 - 21834 (8-4)
- ☐ 4 - LJ300
- ☐ 1 - H8
- ☐ 1 - ST140B (SH)

**FLO~PRO**  
**PERFORMANCE EXHAUST**

*It's a Jeep Thing!!*

**PICKED BY:** \_\_\_\_\_



**WARNING: BEFORE YOU BEGIN, VERIFY  
THAT YOU RECEIVED THE RIGHT KIT &  
EACH PART LISTED ON THE REVERSE PAGE**



**KIT # 884  
2018-19 JEEP WRANGLER JLU  
3" CAT BACK SINGLE TAILPIPE  
WITH MUFFLER**

**Warning:**

*This system **May void manufacturer's warranty**. Allow the vehicles exhaust system to cool before removal. Always practice safe work habits, i.e. jack stands, gloves, safety glasses etc.*

**Notes:**

- **\*\*\*ALWAYS MAKE SURE ALL COMPONENTS ARE IN FLO~PRO BOX ACCORDING TO PICK SHEET BEFORE STARTING REMOVAL OF STOCK EXHAUST SYSTEM\*\*\***
- Any suspension lifts or other variations may require modification of the new exhaust system for proper fit and finish.
- WD40 or equal will make removal of hangers easier. A small tack with a mig welder is recommended under all clamp connections.
- **DO NOT** fully torque clamps until full system is installed and adjusted.

**Removal of OEM exhaust system**

1. Start by removing the factory T-bar skid plate. See **FIG. A**
2. Moving to the back, undo the clamp connection between the axle pipe and the factory muffler. This clamp is above the rear end between the track bar and sway bar. **Note:** the clamp is welded to the pipe)
3. With the muffler supported, spray the two rubber isolators with lubricant and pry the hangers out of the rubbers. **Note:** the brackets holding the isolators to the frame can be removed for easier removal of the muffler.
4. Now that the muffler is loose you can, with some effort, remove the muffler from the axle pipe and from the vehicle.
5. Continue working forward removing the factory components until you reach the first connection. See **FIG. B** The factory clamp will be reused on this joint.

**Installation of new FLO~PRO exhaust**

1. Install your adaptor pipe #21831 using the factory clamp. See **FIG. B** Snug the clamp enough to hold the pipe but so that with some effort it can still be moved slightly.
2. Install extension pipe #30025
3. Install the provided H8 hanger by bolting it through the existing hole in the cross member as shown in **FIG. C** and then install your muffler.
4. Feed your axle pipe #21833 up around and over the rear axle and insert into the muffler.
5. Now you can install your tailpipe.
6. With the tailpipe installed, you can now adjust all of your pipes to ensure you have the maximum clearance over your axle pipe and that your tailpipe comes out straight and level.
7. Starting from the front and working backwards, tighten all clamps securely and install the provided tip.

**NOTE:** With the tailpipe installed you will see improved ground clearance of 2.5" when compared to the stock muffler. For maximum ground clearance you may choose to omit the tailpipe section. If doing this it is strongly recommended that a tac weld be placed on each joint **UNDER** the clamp. **DO NOT WELD THE CLAMPS**

**Technical Support: 1-800-762-4286 or e-mail, [techsupport@flopro.com](mailto:techsupport@flopro.com)  
[www.flopro.com](http://www.flopro.com)**



FIG. A



FIG. B

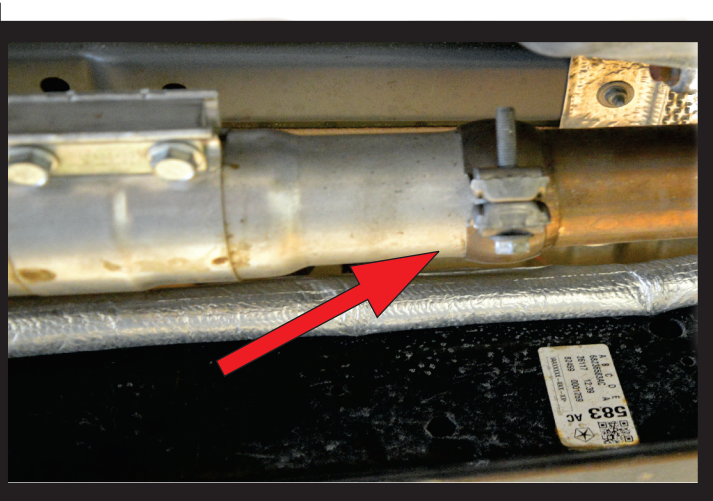
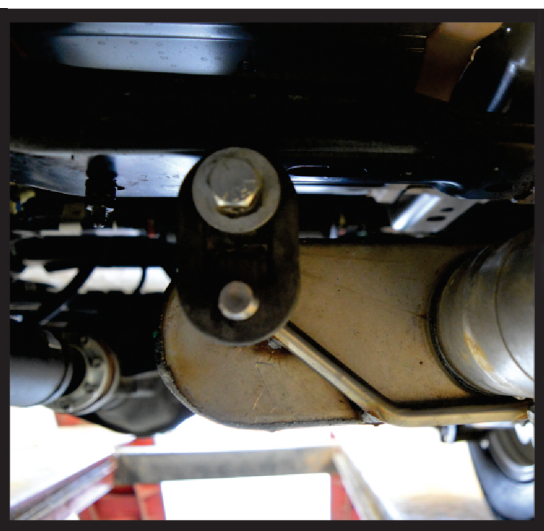
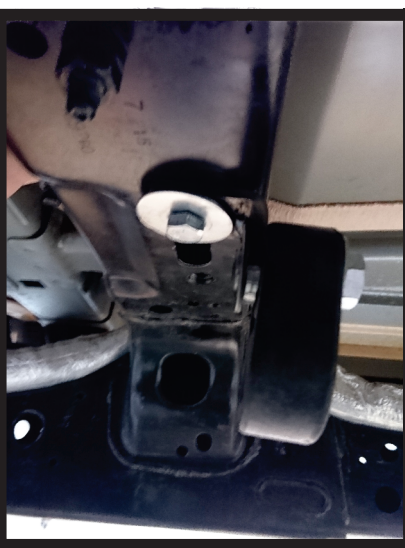


FIG. C



## Tailpipe vs Axle dump options

