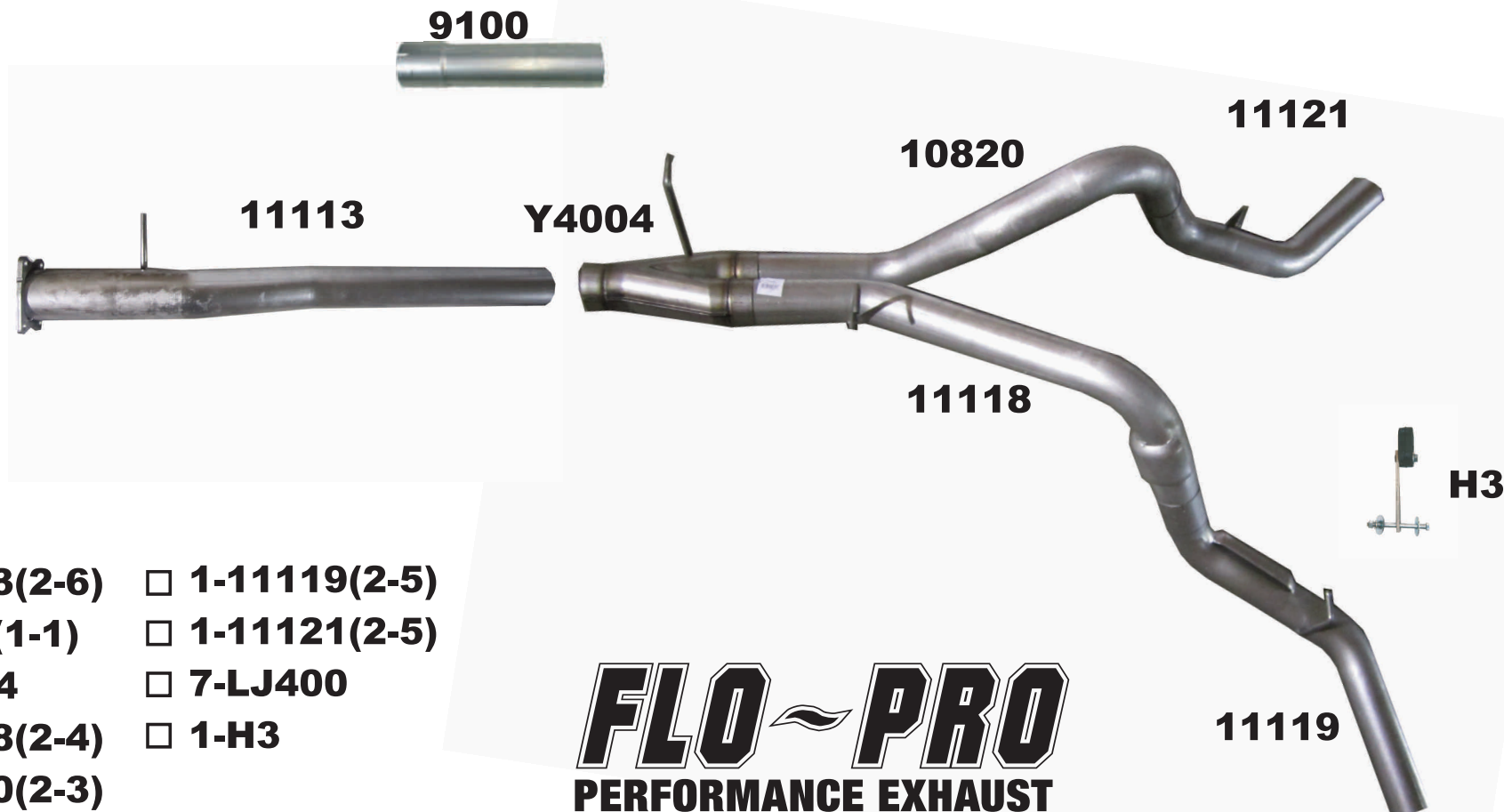


RACE
APPLICATION
ONLY

761

2011 GM DURAMAX 6.6L 4" CAT BACK DUAL SYSTEM



- | | |
|---------------------------------------|---------------------------------------|
| <input type="checkbox"/> 1-11113(2-6) | <input type="checkbox"/> 1-11119(2-5) |
| <input type="checkbox"/> 1-9100(1-1) | <input type="checkbox"/> 1-11121(2-5) |
| <input type="checkbox"/> 1-Y4004 | <input type="checkbox"/> 7-LJ400 |
| <input type="checkbox"/> 1-11118(2-4) | <input type="checkbox"/> 1-H3 |
| <input type="checkbox"/> 1-10820(2-3) | |

FLO~PRO
PERFORMANCE EXHAUST

PICKED BY: _____

KIT #761
2011 CHEV/GM DURAMAX 6.6L
4" DUAL SYSTEM



***Warning: Off-Road Systems require redirecting brake lines.
Make sure there is enough clearance between the
exhaust and brake line/vent hoses, etc .***

Notes:

FLO~PRO Performance Exhaust Systems are designed to fit stock trucks with OEM hitches, tires, wheels, and spare sizes. Any suspension lifts or other variations may require modification of the new exhaust system for proper fit and finish.

Do not tighten clamps until the complete system is in place. Snug clamp down so it will hold the pipe but pipe can still be moved.

WD40 or equal will make removal of hangers easier. Do not tighten clamps until installation is complete.

A small tack with a mig welder is recommended on all clamp connections.

1. Unbolt the flange fastening the downpipe and the DPF/tailpipe assembly. Remove all factory bungs and airlines on Diesel Particulate Filter, tie-strap them to the frame of the truck or take them off at the clip connection (depending on the requirements of your tuning/electronic device). Pull out the metal hangers from the OE rubber hangers. You may need to cut the tailpipe to aid in the removal (**Note: A sawzall or hacksaw is the preferred method of cutting exhaust**). If you do not want to cut the tailpipe, lift the rear end of the truck until the tires are almost hanging freely. Pull assembly towards the front of truck.
2. Install pipe #11113 by attaching the two flanges together using the OEM fasteners. **For shorter wheel bases, you will need to cut it. For Crew Cab Long Box models pipe #9100 will be needed (Be sure to allow for tubing connections approx. 4").**
3. Install "Y" pipe placing metal hanger in the OEM rubber insulator. Install the right over-the-axle exhaust pipe and tail pipe inserting metal hanger into OEM rubber hanger and snug clamp connection.
4. Install the driver's side over-the-axle exhaust pipe into left outlet of "Y" pipe. Place the metal hanger into the OE rubber hanger. Next mount the left tail pipe onto the outlet of left exhaust pipe. Install supplied hanger to the frame directly above the metal hanger on left tail pipe. Snug clamps on left connections.
5. With the pipes mounted loosely, adjust the new Flo-Pro system for clearance and appearance. Evenly tighten all bolts and clamps.

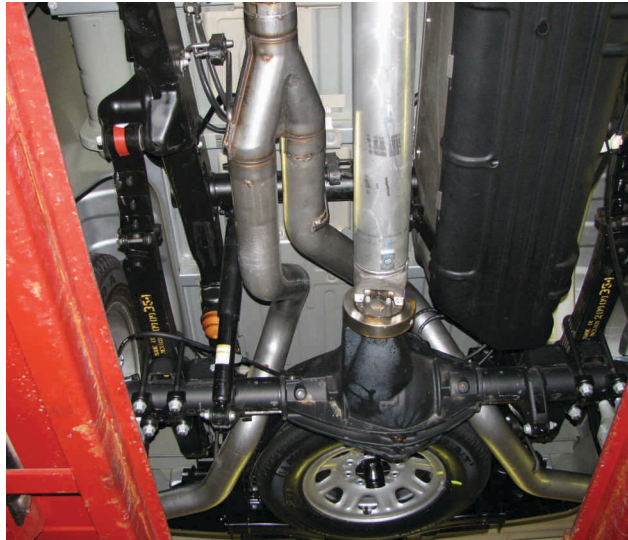


Figure1



Figure 2



Fig 3